

ID 102 - Introduction to Interior Design
James Lemmon – Instructor
(lemmonjp@lamission.edu)

Assignment 2: Survey Your Space

Name of Student: Edward Locke (edwardnlocke2020iphone@gmail.com)

Date of Submission: 3/8/2021

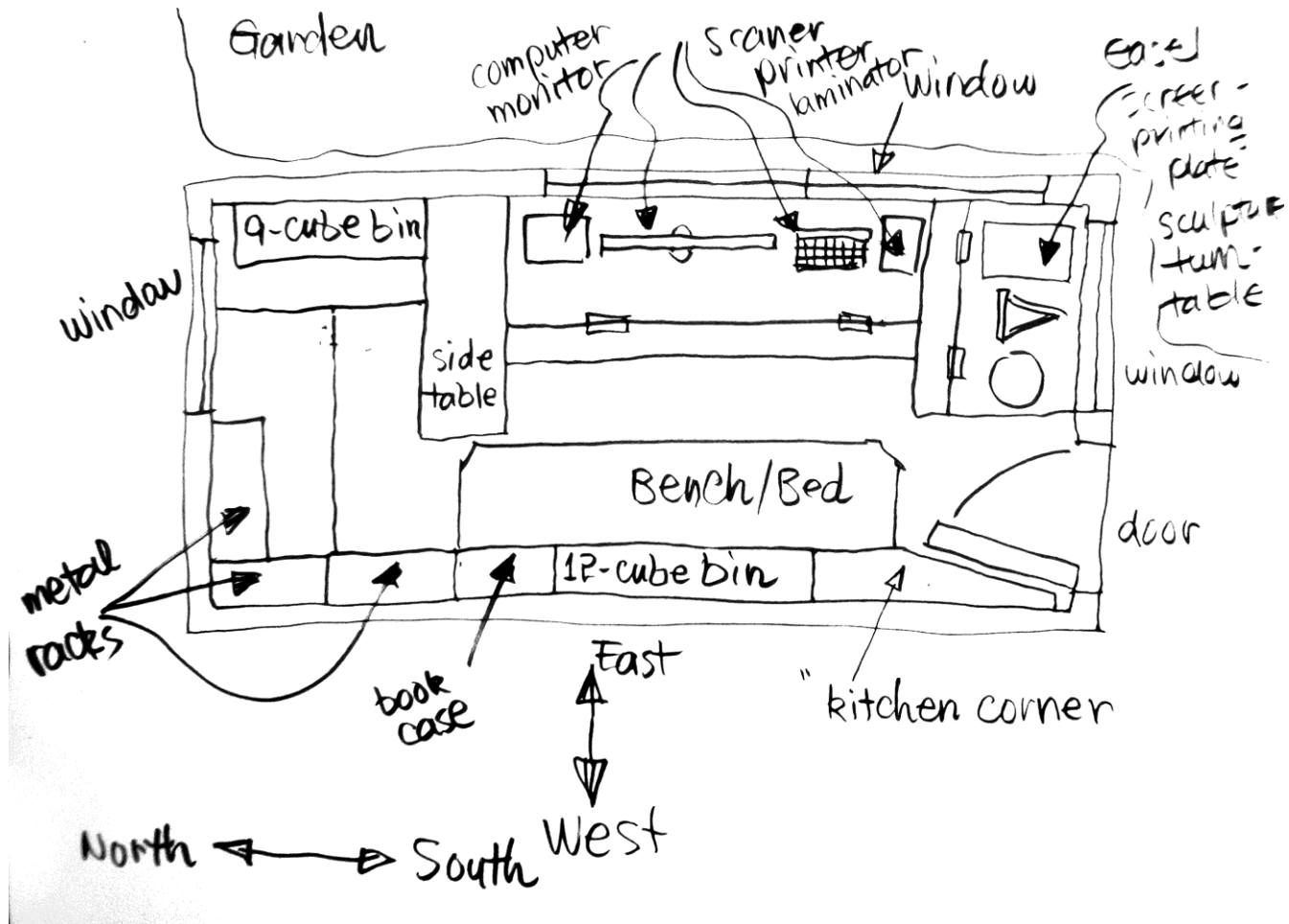
Now that you are more aware of human and environmental factors, tour your living space to see how well it holds up to the levels of health, safety, and welfare discussed in this chapter. You may want to limit this survey to one or two main living areas. Use this checklist for guidance on how to rate your space. Submit this assignment on Canvas in either WORD or PDF format.

	Good	Bad	Neutral
Provides sensory experience	<u>YES</u>	_____	_____
Expresses individuality	<u>YES</u>	_____	_____
Fosters privacy	<u>YES</u>	_____	_____
Fosters socialization	_____	<u>YES</u>	_____
Provides comfortable fit	<u>YES</u>	_____	_____
Promotes safety and health	<u>YES</u>	_____	_____
Is suitable for activities	<u>YES</u>	_____	_____
Is adaptable, flexible for change	<u>YES</u>	_____	_____
Conserves energy	<u>YES</u>	_____	_____
Demonstrates compact use of space	<u>YES</u>	_____	_____

My Eco-friendly, Compact and Multi-Functional Working and Living Space

The room:

I am living in a small room about 10 feet by 25 feet, with a double-panel window facing east on one of the longer walls, and two single-panel windows on both shorter walls facing north and south respectively. Both the wall facing south and next to the entrance door, and the wall facing east with the double-panel window are facing the garden with fruit trees and vegetables. The wall on the north side with a single-panel window is facing the courtyard. The west side wall has no window. Therefore, during the daytime, the room is well illuminated by sun light with windows from three walls.



Sketch for floor plan.

Storage of art and office supplies:

I have a lot of boxes containing art and office supplies or tools; I divided them into two categories: (1) those to be used frequently; and (2) those to be used after the end of 2021. I selected the ones for use after the end of 2021, placed them separately by types in heavy-duty 17 Gallon Tough Storage Bins purchased at \$13.47 each from Home Depot (<https://www.homedepot.com/p/HDX-17-Gal-Tough-Storage-Bin-in-Black-SH17GTOUGHTLDBY/205808350?MERCH=REC--searchViewed--NA--205808350--N>), on the entire floor, in three layers.



Heavy-duty tough storage bins. Wood stud.

Staircase: The accumulated height of these three layers of storage bins is closely equivalent to the height of four steps in a standard staircase; therefore, I custom built three 20-inch long and 11-inch deep wooden boxes of various heights (7-inches, 14-inches, and 21-inches), as movable steps and storage units, and placed them by the entrance door on the south side.

Alternative floor:

I placed 2 feet by 4 feet wood panels purchased from Lowes (<https://www.lowes.com/search?searchTerm=wood+panels>), and connect them with mending plate brackets and screws as the ground floor, on top of the three layers of Tough Storage Bins.

Furnitures:

I custom built three large working tables to make my small working and living space a functional art and design studio.

(1) My digital professional activity space: I placed my Dell Inspiron 17-3000 notebook computer, large-size 29" x 17" Hewlett-Packard monitor, and accessories such as a J5Create 360° All Around Webcam (about \$100) bought at Best Buy for zoom meetings, an Epson EcoTank ET-15000 inject printer/flat-bed scanner (about \$200), a Hewlett-Packard Color LaserJet Pro M255dw printer (about \$500), and a Fellowes Saturn 3i 125 Thermal & Cold Laminator, 12.5" Width, Silver/Black (5736601, \$241.99) bought at Staples, on the large 4 feet by 2 feet table with a 4 feet by 16 inch hinged extension piece, by the large double-panel window facing east.

(2) My main storage and living space: In front of the above large 4 feet by 3 feet table next to the double-panel window facing east, and by the wall on the west side, I placed a white 11" 12-Cube Organizer Shelf - Room Essentials bought at \$60 at Target, inserted by 12 Mainstays Collapsible Storage Bins bought at \$3.95 each at Wal-Mart, for the art supplies and tools to be used frequently. On the right side of this 12-Cube Organizer is a bookcase made of 6 12" (L) x 18" (D) x 11" (H) heavy-duty milk crates saved from trash dumpster and disinfected with sprinkled water, 90% alcohol (\$3.29 per 1 QT bottle) and hydrogen peroxide (\$1.00 per 1 QT bottle) bought at Wal-Mart, and 3 13.1" (L), 11" (H) x 13.1" (D) Rehrig Pacific Company 16qt Gray Industrial Milk Crate (\$8.99 each) bought at Target. Under the 12-Cube Organizer and the bookcase is a 72" (L) x 36" (D) x 18" (H) storage space supported by 2.5" x 1.5" dried wood stud frame custom-built to contain heavy-duty plastic storage bins, all purchase at Home Depot, also for art supplies and tools. On top of this storage space and in front of the 11" 9 Cube Organizer and the bookcase, I placed a hinged 6 feet by 2 feet wood panel bought at Lowes serving as a bench and a bed, which is covered with seat cushions and pillows which covers are printed with images of tree leaves and birds. Two persons could sit on this bench to watch the YouTube videos on the large Hewlett-Packard monitor if necessary.

(3) My primary traditional artistic creativity space: I placed my tabletop easel for drawing and painting, my silk-screen plate for printing and my rotational sculpture table for creating sculpture and ceramic works on my second table (4 feet by 2 feet with a 4 feet by 12 inch hinged extension piece) facing south and next to the entrance door.

(4) My secondary traditional artistic creativity space: I placed my light box for illustration works and 2 Zimtown 3 Tier Storage Rack Wire Shelving Unit Storage Metal Shelves (\$19.99 each) bought at Wal-Mart for finished artworks (paintings, drawings and illustrations), on the third table (4 feet by 2 feet) by the wall on the north side and next to the single-panel window facing the courtyard. By the single-panel window facing north and against the wall on the east side, I placed a 11” 9-Cube Organizer Shelf - Room Essentials (\$40) bought at Target; this 9-Cube Organizer displays my sculpture and ceramics works. This 9-Cube Organizer together with the above adjacent 4 feet by 2 feet table also serves as a tiny but functional photographic studio for my sculptural and ceramic works, with lamps installed on top of the metal Storage Racks.



Ceramic vase.

Watercolor painting.

Color light bulbs.

All of the above-mentioned tables are placed next to windows to take advantage of natural day light; two of them have foldable extended piece to enlarge the table size if needed.

A folding chair is used for the other two tables. Beneath the tables are 5 Sterilite 3-Drawer Carts bought (\$9.99 each) and 2 Sterilite Wide 3 Drawer Cart (\$16.98 each) bought at Wal-Mart, for stationery or office supplies, as well as art tools and supplies, especially drawing and painting pads as well as illustration boards.

(5) My small kitchen corner: By the entrance door, I custom-built a multiple shelf storage case to place kitchen utensils, dried food, cans, seasoning bottles, drink bottles, two glass jars with faucets, and a Farberware Royalty 1800 W Double Burner Black Electric Cooktop (\$19.99), and a Farberware Programmable Digital Pressure Cooker, 6 Quart (\$49.88), both bought at Wal-Mart. To prevent fire hazards due to over-heating, I place ceramic tiles under the electric cooktop and cooker.



12-cube storage organizer.

9-cube storage organizer. Milk crates.



Collapsible storage bins.



Sterilite Wide 3 Drawer Carts.

Metal rack.



Cooktop, pressure cooker and “kitchen corner” shelves.

Lighting:

I hung one Hyper Tough LED 4 ft Steel, 5000 Lumen LED Shop Light fixture with 30 Actual Watts used and 45 Watts Equivalent for \$18.97, and one Hyper Tough 5500-Lumen LED 4 ft Steel, Shop Light, with 55 Actual Watts used and 250 Watts Equivalent and Motion Detection for \$34.94, purchased from Wal-Mart; these LED fixtures have built-in LED tubes and are guaranteed for 5 years; no change of light tubes is necessary; they are energy efficient and thus ecologically friendly; they

work well to provide brilliant light at night. My small living room thus contain tools and equipment for traditional and digital artistic creation. Table lamps are used too, with reflector lamps. Decorative night light is also used when sleeping.

To avoid glare early in the morning, I placed a set of window curtains on the double-panel window facing east (Nada Sage Green Complete Window Curtain Set 2 Panels Faux Silk Leaf Floral 2 Panel Solid Sheer 2 Attached Valance 2 Tassel Thick Heavy Window Curtain Drape 84” Length, \$15.50 at Wal-Mart).

Color scheme:

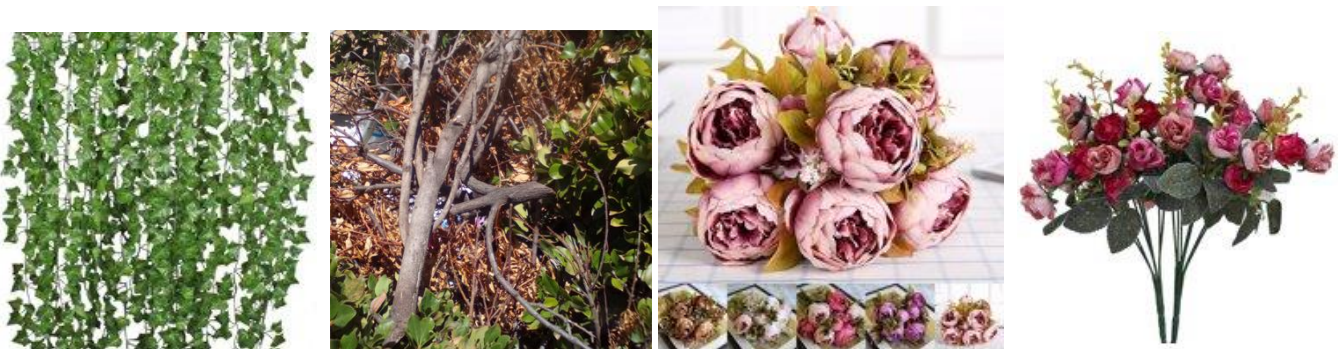
To make my small room appear larger, I will paint the ceiling light blue, the walls and the entrance door light green, the window and door frames light red, in a split complementary color harmony scheme, as shown in the picture below; sponges and wrinkled paper towels will be used to add textures to the ceiling and the walls with white paint.



Color harmony scheme with paint color samples from Home Depot (left), and window curtain from Wal-Mart (right).

Biophilia:

To apply the concept of biophilia, I will use dried twigs cut from trees and plastic leaves sold at Wal-Mart, Dollar Tree and Daiso (\$1.00 to \$5.00 each), to build models of trees and place them by the two windows facing the garden, with some plastic tree leaves nailed to the edges of the ceiling, to create a garden-like environment in my art and design studio. In addition, I will decorate my room with stuffed animals, silk flowers and other decorative items to make my living space more interesting; these items will also serve as three-dimensional models for my artistic creation.



Plastic leaves and dried twigs.

Silk flowers.



Models of animals.



Stuffed animals.



Dolls.



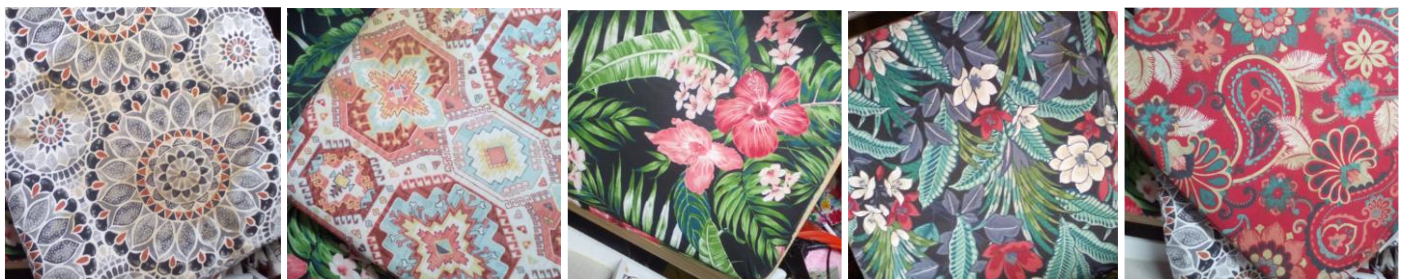
Toy trucks and helicopters, train and airplane.



Scale human models.



Wood hand models.



Seat cushions covers with floral and geometric patterns.



Pillow covers with leaves, flowers, and bird images.

Conclusions:

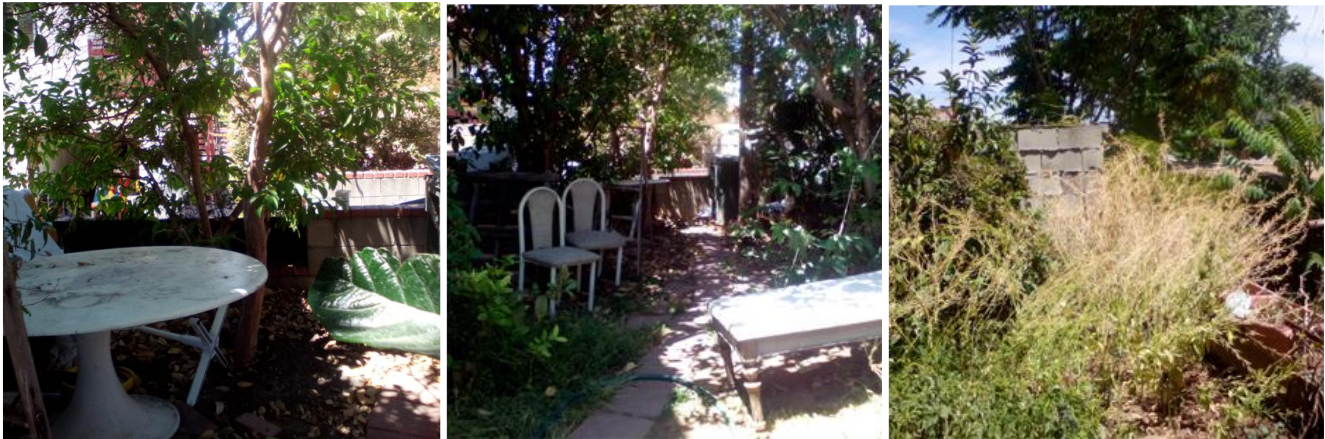
Although my space is small, I effectively used the limited space to place bookcase, storage bins, and storage racks for my oil, acrylic, and watercolor paintings, screen-prints, sculpture and ceramics; I also custom-built large and extendable working tables for traditional and digital art and design activities.

My space fits my needs as both an office/studio and a bedroom/dinning room; it possesses good attributes from most of the items in the check list. My multi-functional working and living room provides sensory experience, expresses individuality, fosters privacy, provides comfortable fit, promotes safety and health, is suitable for my professional as well as living and entertaining activities, is adaptable, flexible for change, conserves energy, and demonstrates compact use of space.

The only shortcoming is it does not foster socialization; and this is due to the small dimensions of the room; and I overcome this limitation by using a table outside of my room, at the landing of the staircase leading to the third floor above my room and by a window facing the garden on the south side. I can use my laptop computer to show my works to clients while discussing business; at the corner of the hallway by the east side wall with a window facing the garden on the third floor, I can show my sculptural and ceramic works to potential collectors after they view them online. Alternatively, these business-related activities could be conducted in the garden on the ground floor and under my studio.



The landing of the staircase and the table by a window facing south (left). A large storage box with similar height as a table at the corner of the hallway by the east side wall with a window facing the garden on the third floor.



The garden with chairs, table and display bench, to be covered with white cloth pieces for business meeting.