

ID 102 - Introduction to Interior Design  
James Lemmon – Instructor  
([lemmonjp@lamission.edu](mailto:lemmonjp@lamission.edu))

## Assignment 6: Lighting Design Survey

**Name of Student:** Edward Locke ([edwardnlocke2020iphone@gmail.com](mailto:edwardnlocke2020iphone@gmail.com))

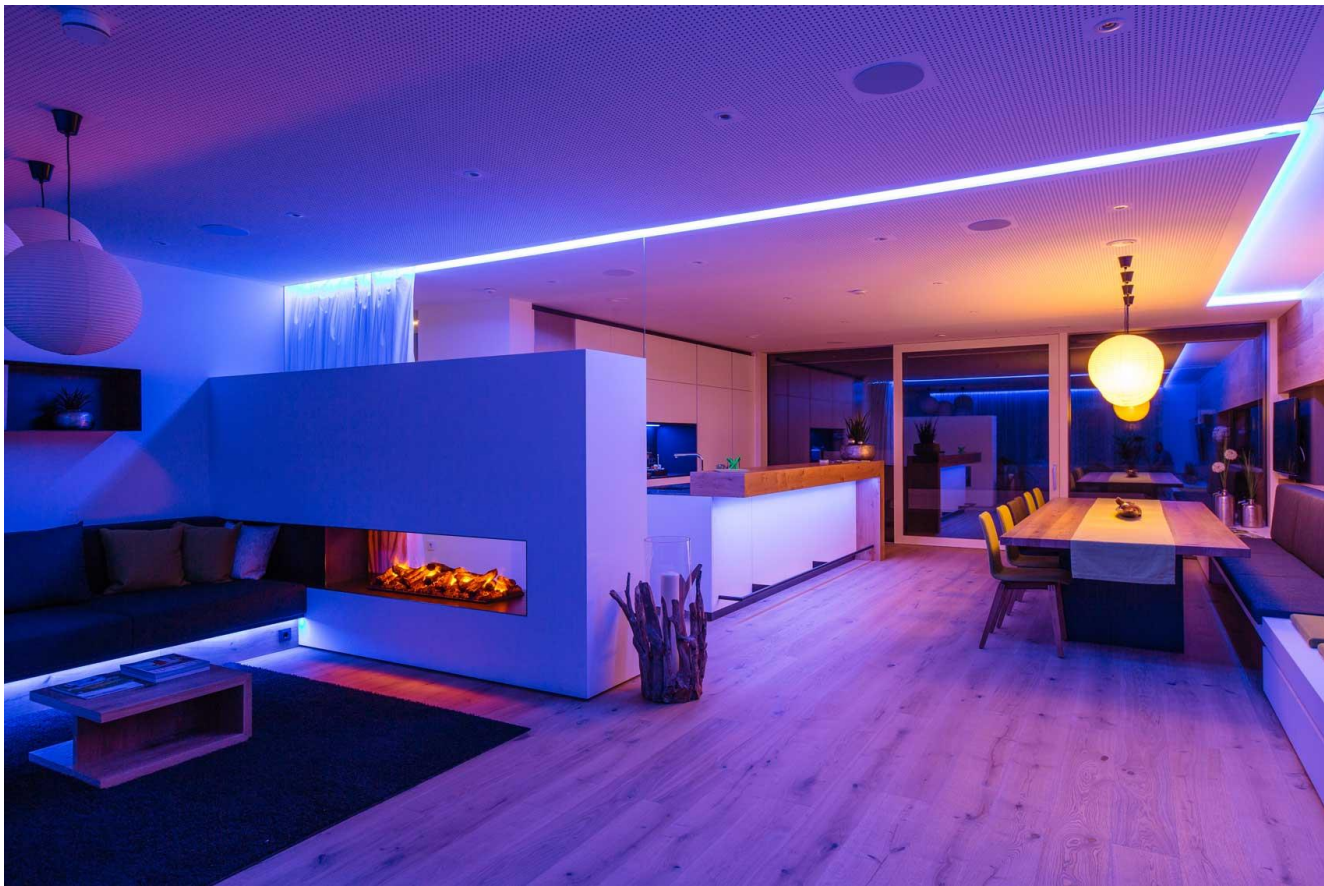
**Date of Submission:** 5/10/2021

Search the internet to find three interior settings that demonstrate ambient, task, and accent lighting. These settings might be a museum, bedroom, cafe, classroom, library, etc.

Write a brief narrative of your image to record any observations such as glare; quantity and quality of light; relationship of the light to other elements, such as texture, color, or mood or other human factors; and energy efficiency or waste. Submit this assignment on Canvas in either WORD or PDF format. See sample below:



*This office lobby uses downlighting to highlight the texture of the walls; recessed cove uplighting above the reception desk to highlight the ceiling architecture and bounce diffused lighting off the ceiling; possibly uses concealed, under-counter strip lighting at the reception desk; and harvests daylight from the window.*



Source: <https://www.loxone.com/enus/blog/ambient-lighting/>

This office conference area uses recessed downlighting in the ceiling to provide ambient light to the entire space; a large hanging task light illuminates the conference table. The lighting gives a feeling of mysticism with multiples colors in the interior space. No noticeable glare is observed. Energy efficiency is achieved.



Source: <https://www.rli.uk.com/new-bangkok-store-for-burberry-in-thailand/>

This fashion store uses downlighting from task lights on the tracks installed on the ceiling to provide ambient light and to highlight the entire space at the same time; the wall on the left is probably highlighted with accent light from the ceiling too. No glare is observed. The lighting gives a feeling of coziness and “at home” atmosphere suitable for a fashion store. Energy efficiency is achieved.



Source: <https://www.nytimes.com/2020/10/19/arts/design/europe-museums-covid.html>

This museum interior probably uses “soft” downlighting to provide ambient light to the entire space; it also uses accent light to illuminate the paintings on the wall. No glare is observed. The quantity of light is sufficient, and energy efficiency is achieved.

## Shown Below Are Extra Works



Source: <https://beautyharmony.com/planning-office-interior-design/>

This office space uses downlighting to provide ambient light; it also uses “boxed” lights hung from the ceiling as task lights for the working desk; It features accent light on the columns in the left side. Since it is in the daytime, most of the light is daylight from the sun; thus, it is difficult to evaluate the quantity and quality of light intended for the night or the efficiency of energy use. Maybe during the daytime, the accent lights should be turned off to conserve energy. No glare is observed.



Source: <https://www.highstreet.co.id/en/blog/an-office-interior-design-makes-work-more-fun-which-should-you-choose/>

This office space uses downlighting from lights on the ceiling to provide both ambient light and task light for the working desks; it also uses task lights hung from the ceiling (on the left side, inside the enclosed area), or on the wall (right side) to provide additional light. The quantity and quality of lighting are good and sufficient, Efficiency in energy use is achieved.